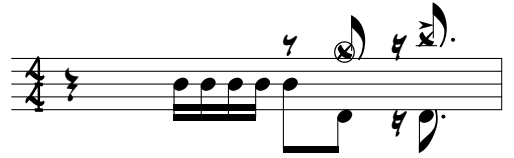
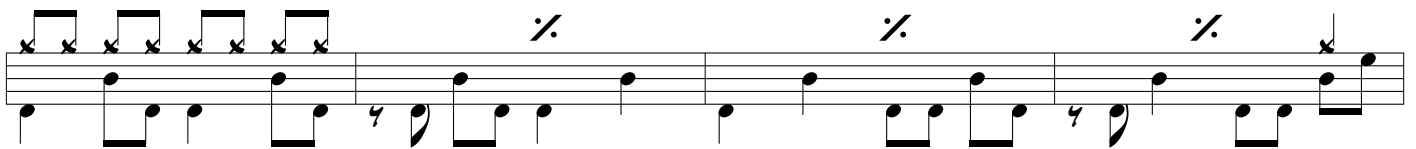
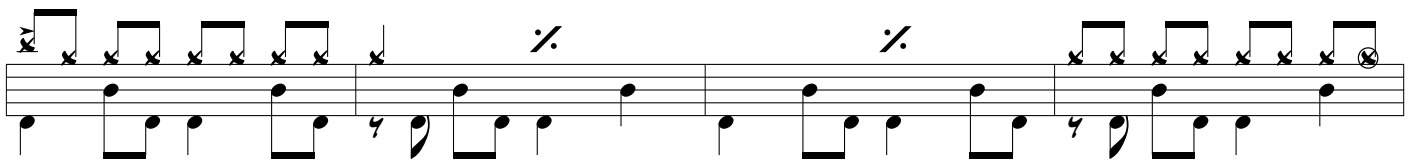
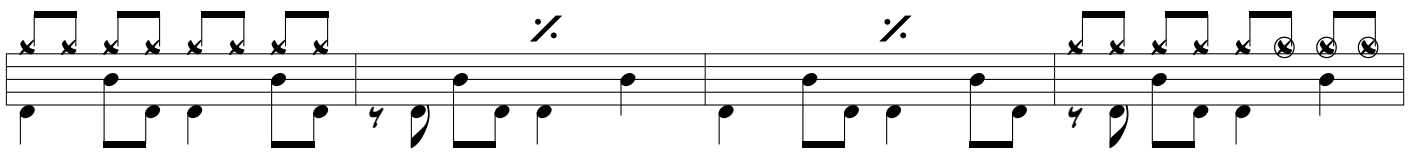
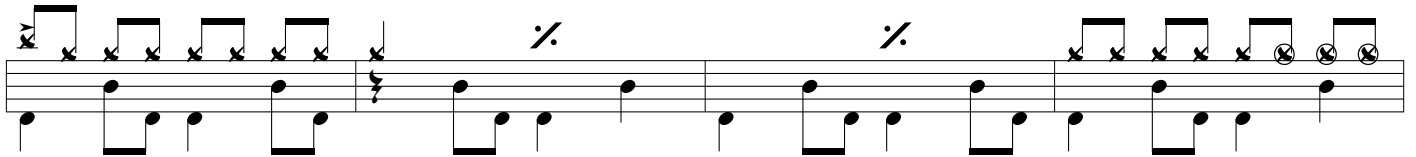


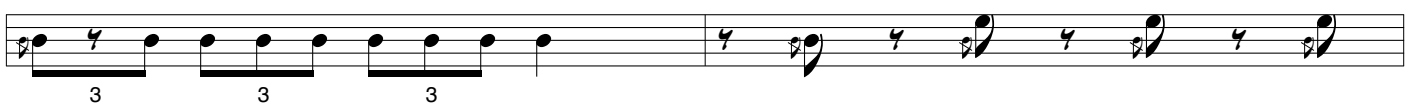
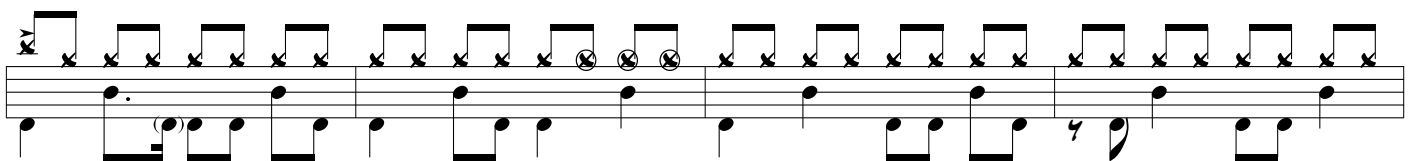
♩ = 116



Couplet



Pont



Refrain

The first line of the Refrain section consists of two staves. The upper staff contains a sequence of eighth notes with 'x' marks above them, indicating fretted notes. The lower staff contains a bass line with quarter notes. The first measure has a key signature change symbol (two flats). The second measure contains two circled 'x' marks above the notes. The line ends with a repeat sign.

The second line of the Refrain section consists of two staves. The upper staff continues the sequence of eighth notes with 'x' marks. The lower staff continues the bass line. The first measure has a key signature change symbol. The second measure contains two circled 'x' marks. The line ends with a repeat sign.

The third line of the Refrain section consists of two staves. The upper staff contains eighth notes with 'x' marks. The lower staff contains quarter notes. The first measure has a key signature change symbol. The second measure contains a circled 'x' mark. The line ends with a repeat sign.

Couplet 1/2

The first line of the Couplet 1/2 section consists of two staves. The upper staff contains eighth notes with 'x' marks. The lower staff contains quarter notes. The first measure has a key signature change symbol. The second measure contains a circled 'x' mark. The line ends with a repeat sign.

The second line of the Couplet 1/2 section consists of two staves. The upper staff contains eighth notes with 'x' marks. The lower staff contains quarter notes. The first measure has a key signature change symbol. The second measure contains a circled 'x' mark. The line ends with a repeat sign.

Refrain

The first line of the second Refrain section consists of two staves. The upper staff contains eighth notes with 'x' marks. The lower staff contains quarter notes. The first measure has a key signature change symbol. The second measure contains two circled 'x' marks. The line ends with a repeat sign.

The second line of the second Refrain section consists of two staves. The upper staff contains eighth notes with 'x' marks. The lower staff contains quarter notes. The first measure has a key signature change symbol. The second measure contains a circled 'x' mark. The line ends with a repeat sign.

*etc...*